

YOUR
PLACE
TO RELAX



**RE
WITA**

www.rewita.pl



#wecreatebeautifulmemories



AMW REWITA

AMW REWITA is a company that has been offering leisure services for over 50 years. Our base consists of 12 holiday resorts located in the most attractive tourist areas of the country - along the entire coast of the Baltic Sea, in Masuria, in the Pomeranian Lake District region at the southern gates of Bory Tucholskie, on the Zegrze Lake near the mouth of the Bug River, in the medieval Czocho Castle, popular Tatra resorts - Kościelisko and Zakopane, and the wild Bieszczady Mountains by the Solina Reservoir. These locations will satisfy the tastes and preferences of the most demanding tourists, starting from those who prefer stationary holidays, through amateurs of active tourism and recreation, and ending with sports enthusiasts. Everything is surrounded by nature, which we value so much and which we look for when planning a holiday. A wide range of accommodation standards in our resorts will provide you with the optimal choice, and the rich gastronomic offer combined with various local attractions, tourist and recreational base and sports facilities will make your holidays with us really successful.

Our centers provide a wide range of forms of recreation, enable you to practice tourism, sports and biological regeneration. We have among others: our own water marinas and beaches, various water sports equipment, outdoor and indoor gyms, tennis courts, sports fields, bicycle rentals, a shooting range, a bowling alley, a rope park as well as physiotherapy equipment, saunas, Russian banya, a swimming pool and many other elements to increase the attractiveness of your holiday.

We guarantee the unique character of the location of our facilities, comfortable rest in the bosom of nature, relaxation, unique atmosphere and excellent gastronomic offer available in all our centers.



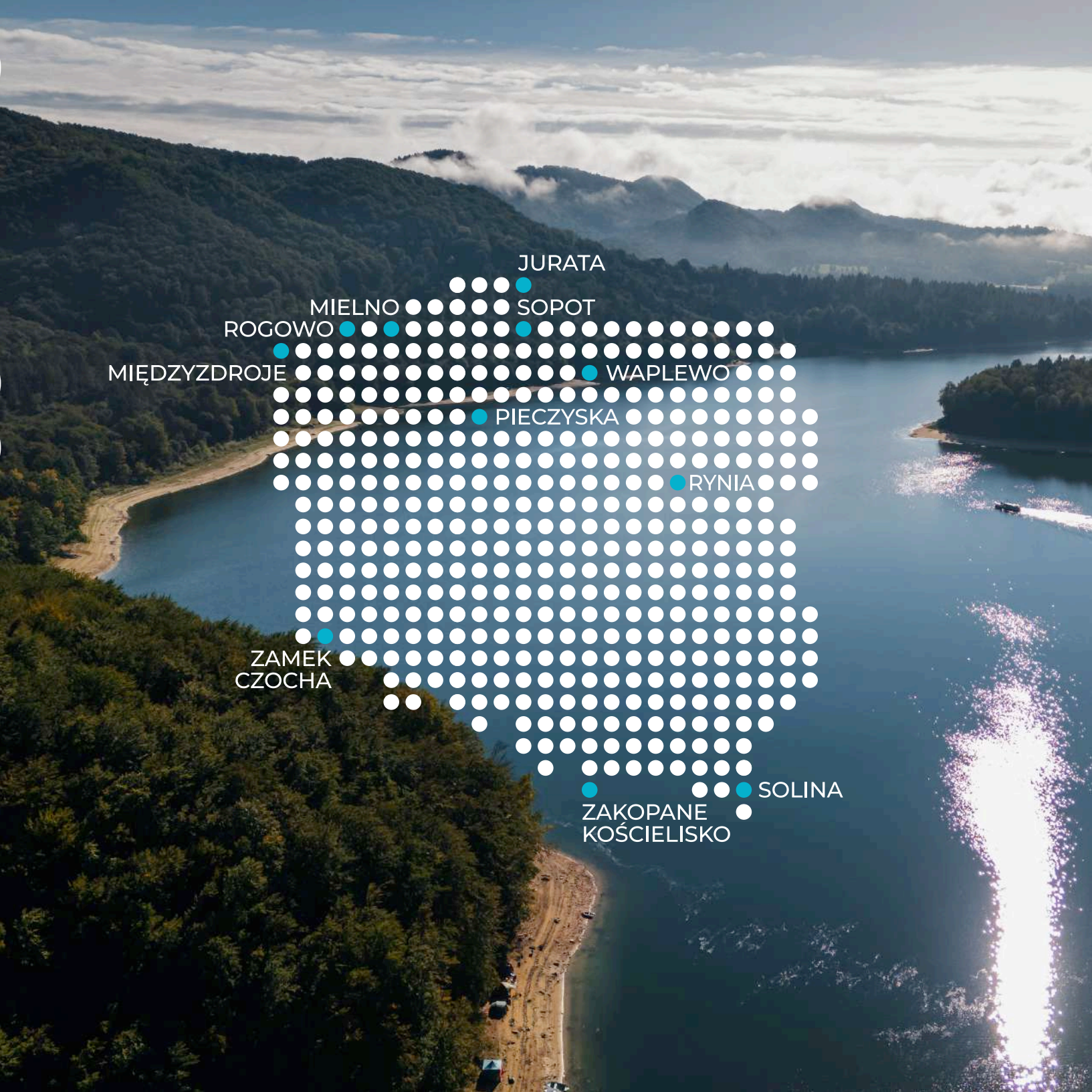
SEA



LAKES



MOUNTAINS



SEA

SOPOT	4
JURATA	6
MIĘDZYDROJE	8
ROGOWO	10
MIELNO	12

LAKES

WAPLEWO	14
RYNIA	16
PIECZYSKA	18

MOUNTAINS

SOLINA	20
SUCHA - ZAMEK CZOCHA	22
KOŚCIELISKO	24
ZAKOPANE	26

SOPOT



REWITA Sopot consists of two exclusive facilities - "Korab" and "Imperial", located in the heart of the city on the seaside promenade, directly on the Baltic Sea.

Views of the sea and the beach from many rooms, high standard and proximity to the pier, which is a showcase and at the same time the center of Sopot, determine the extraordinary attractiveness of this location.

It is an ideal place for a holiday for everyone who is looking for various forms of recreation, from traditional sunbathing and walks along the Baltic coast, through the use of the resort's recreational base, to participating in numerous cultural, entertainment and recreational events, offered both by Sopot and the entire Tri-City.

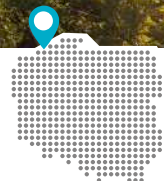
We offer approximately 180 beds in single, double, triple and quadruple rooms, including suites. We provide a diverse and excellent catering service for our guests.

FACILITIES



tel.: +48 58 551 06 85

rezerwacje-sopot@rewita.pl



Rewita Sopot

Kilińskiego 12
81-772 Sopot

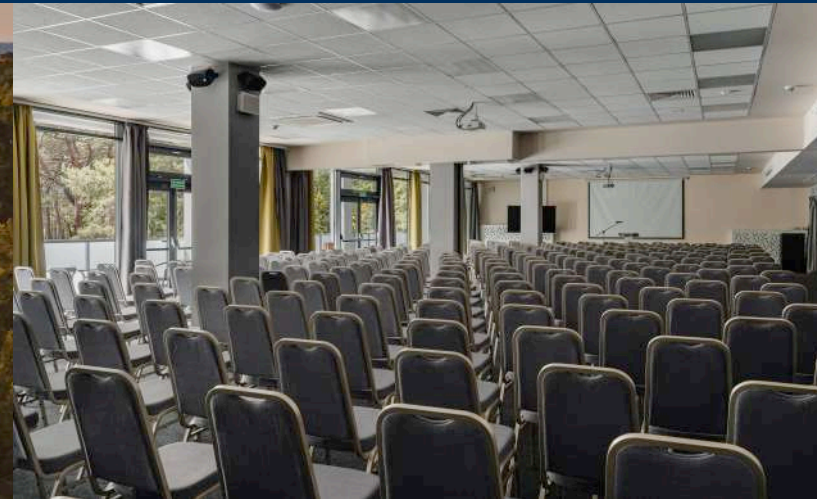


rewita.pl/obiekty/rewita-sopot-imperial
rewita.pl/obiekty/rewita-sopot-korab
rewita.pl/obiekty/rewita-sopot-rusalka



[/amwrewitasopot](https://www.facebook.com/amwrewitasopot)

JURATA



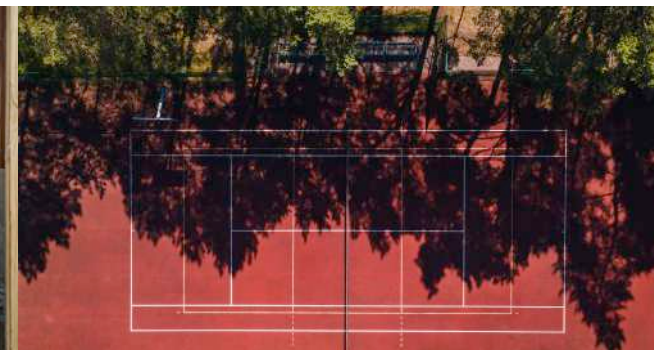
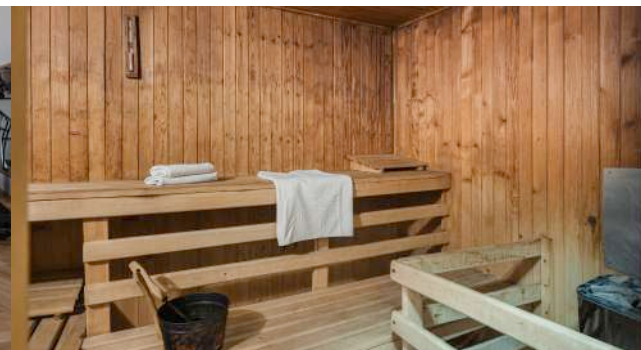
REWITA Jurata has a unique location on the longest natural pier in Europe - the Hel Peninsula. Due to its location in the forest, surrounded by unique dunes and vegetation of the Seaside Landscape Park, it is an ideal place to rest for tourists looking for peace and quiet.

Our resort is located between the open sea and the Puck Bay. Among others, we have a private pier, a beach bar, and the sunset views of the Tri-City from the terrace of the cafe located on the very shore of the bay, can be considered the most beautiful view on the entire peninsula.

The spit widening towards Hel and undeveloped areas are an excellent walking route and an enclave of silence, and the pine forests on the charming sand dunes, combined with the sound of the sea, give the area an unique atmosphere. Strong winds from the direction of the Puck Bay attract crowds of windsurfing and kitesurfing enthusiasts. The length of the peninsula encourages forest and seaside walks, running or cycling trips.

We also have our own access to the beach from the sea. We offer over 1,000 beds in single, double, triple and quadruple rooms, as well as suites of the "Delfin", "Juratka" and "Goplana" facilities. The resort has also full catering facilities, offering a wide and diverse range of services in this scope.

FACILITIES



tel.: +48 (58) 675 42 28
tel.: +48 (58) 675 42 85
rezerwacje-jurata@rewita.pl



Rewita Jurata

Helska 2
84-150 Hel



rewita.pl/obiekty/rewita-jurata
rewita.pl/obiekty/rewita-jurata-jantar
rewita.pl/obiekty/rewita-jurata-bursztyn
rewita.pl/obiekty/rewita-jurata-czajka
rewita.pl/obiekty/rewita-jurata-kormoran



/rewitajurata

MIĘDZY ZDROJE

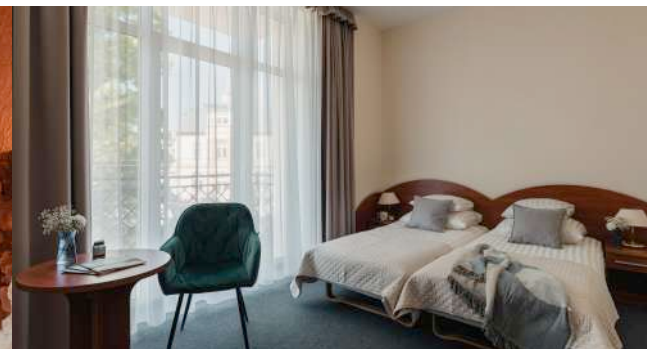
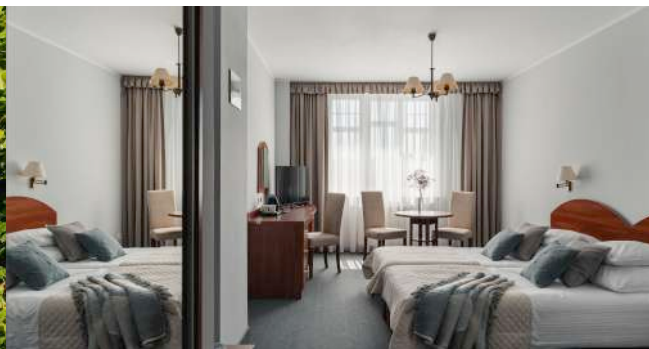
REWITA Międzyzdroje consists of five charming and intimate facilities, located in different parts of the city, but almost all of them are located near the seaside beaches, not far from the pier extending almost 400 meters into the Baltic Sea,

as well as near the famous Promenade of Stars and the amphitheater where - as in Hollywood, the most outstanding Polish artists were honored with handprints and autographs.

The major attractions of Międzyzdroje are its beautiful beaches with their high cliffs, near Wolin National Park, Wax Figure Museum or simply walking along the paths of the Zdrojowy Park. Międzyzdroje - often called "The Pearl of the Baltic" has long enjoyed a reputation as a trendy seaside resort attracting swarms of tourists in summer.

We offer beds of various standards and configurations in buildings located in attractive parts of the city, the most popular of which is the historic villa "Grunwald".

FACILITIES



tel.: +48 (91) 328 07 81

rezerwacje-miedzyzdroje@rewita.pl



Rewita Międzyzdroje

Promenada Gwiazd 3
72-500 Międzyzdroje

 rewita.pl/obiekty/rewita-miedzyzdroje

 [/rewitamiedzyzdroje](https://www.facebook.com/rewitamiedzyzdroje)

ROGOWO



REWITA Rogowo is located by the Baltic Sea, 18 km from the popular health resort of Kołobrzeg on the spit between the sea and the Resko Przymorskie Lake.

Its location away from crowded resorts makes it an ideal place for those looking for a seaside holiday in a quiet and peaceful place.

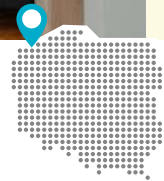
The seaside beach in Rogowo is uncrowded and one of the most attractive on the west coast. Those who prefer cycling trips can also choose from the 52 km route around Resko Przymorskie Lake or the natural and historical bicycle route "Towards the Sun" at the eastern part of this reservoir.

We offer apartments and rooms for 2, 3, and 4 people. Our showpiece in this location are apartments and rooms in the Scandinavian style as well as a private descent to the beach.

FACILITIES



tel.: +48 91 386 62 69
tel.: +48 602 862 829
rogowo@rewita.pl



Rewita Rogowo

 rewita.pl/obiekty/rewita-rogowo

Rogowo 76
72-330 Mrzeżyno

 [/rewitarogowo](https://www.facebook.com/rewitarogowo)

MIELNO



REWITA Mielno is a resort located near the seaside beach and on the shore of the Jamno Lake. The specific microclimate characterized by healthy clean air, wide beaches and natural dunes as well as the vicinity of forests

are the main advantages that favor the choice of this place for rest - individual, family or group. The resort is located in a secluded location and occupies a 9-hectare, safe, fenced area.

Guests can relax here in a quiet and intimate atmosphere, 3 km from the noisy city center. Combined with the excellent gastronomic offer, friendly and professional service, and this creates comfortable holiday conditions.

The large area of the resort is conducive to physical activity, and our guests can choose to rest both by the sea and the lake, where we have our own marina and we enable the use of water equipment. We offer 5-6 person studios and the new, attractively equipped wooden houses and for up to 6 person.

FACILITIES



tel.: +48 512 805 036
tel.: +48 (94) 348 18 00
rezerwacje-mielno@rewita.pl



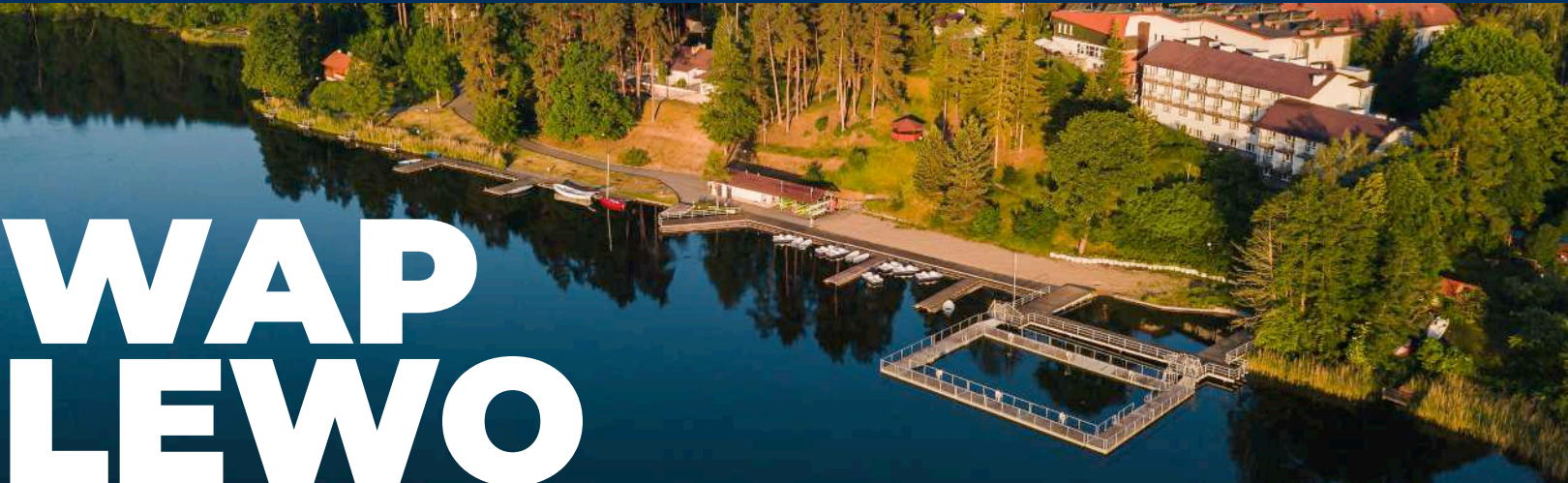
Rewita Mielno

Suriana 24
76-032 Mielno-Unieście

 rewita.pl/obiekty/rewita-mielno

 [/amwrewitamielno](https://www.facebook.com/amwrewitamielno)

WAPLEWO



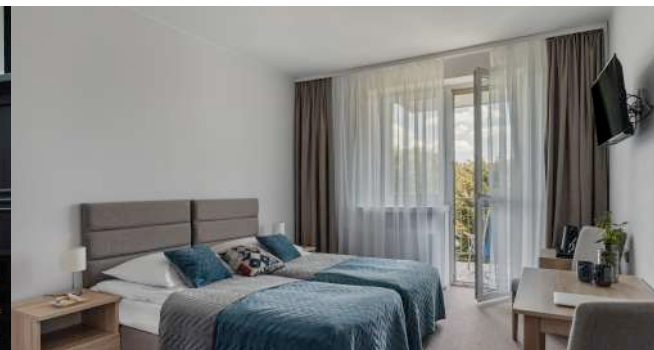
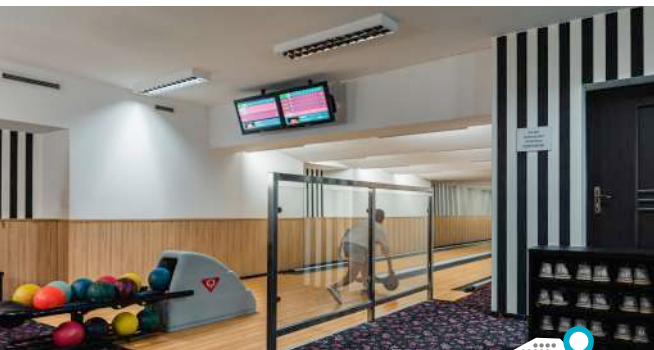
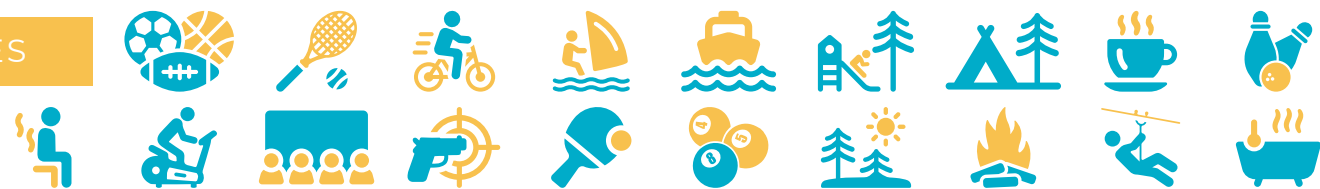
REWITA Waplewo is located 180 km from Warsaw in the picturesque surroundings of Mazury forests directly by the shore of Maróz Lake.

The peace, quiet and beauty of nature that distinguish this place make it an attractive holiday destination at any time of the year.

The advantages of the surrounding nature and the specific microclimate make the resort an ideal place for all age groups and various forms of recreation and relaxation. It is also a good starting point for amateurs of hiking and cycling trips combined with exploring the Mazury region.

It is also worth visiting the nearby landmarks of the region and cities with a rich history - Olsztynek and Nidzica, as well as the site of the famous Battle of Grunwald and the museum dedicated to it in nearby Stębark. We offer rooms, suites, residential segments and comfortable villas.

FACILITIES



tel.: +48 (89) 519 25 25
tel.: +48 510 087 050
rezerwacje-waplewo@rewita.pl



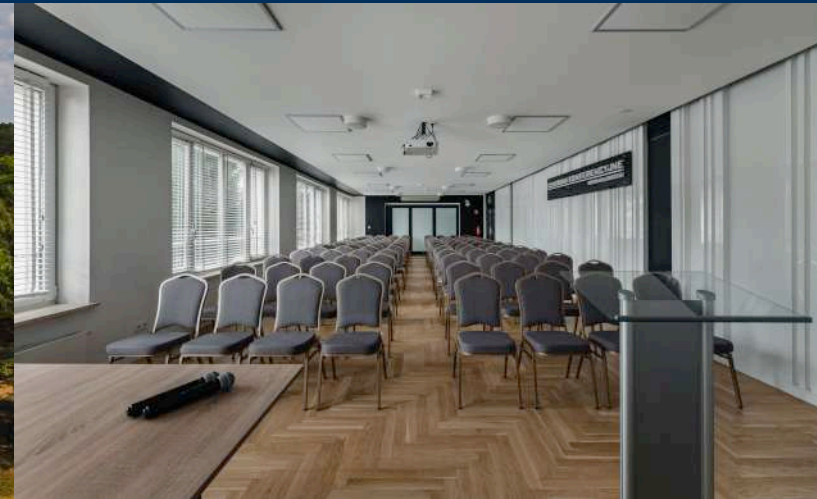
Rewita Waplewo

Maróz 2
11-015 Olsztynek

 rewita.pl/obiekty/rewita-waplewo

 [/rewitawaplewo](https://www.facebook.com/rewitawaplewo)

RYNIA



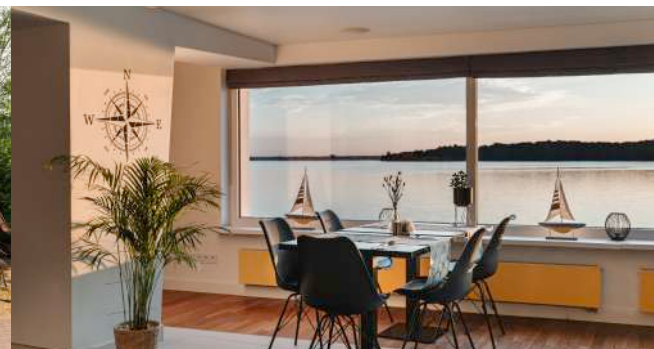
REWITA Rynia is a resort located on the shores of Zegrze Lake, surrounded by a beautiful pine forest, near the mouth of the Bug River, which ends its course here.

It's an ideal place for active forms of spending free time, especially using of water sports equipment, which is available at our marina.

As the only resort in the area, we have our own sandy beach, inaccessible from the outside. The location of the facility is also conducive to recreational walks, being particularly popular among mushroom pickers in the autumn.

Fishing enthusiasts will also find a place to pursue their passion here. The advantage of the resort is its proximity to Warsaw, which creates opportunities for sightseeing of the city. We offer single, double and triple rooms (including superior rooms) in the hotel building and pavilions.

FACILITIES



tel.: +48 508 679 176
tel.: +48 (22) 768 01 66
repcja.rynia@rewita.pl



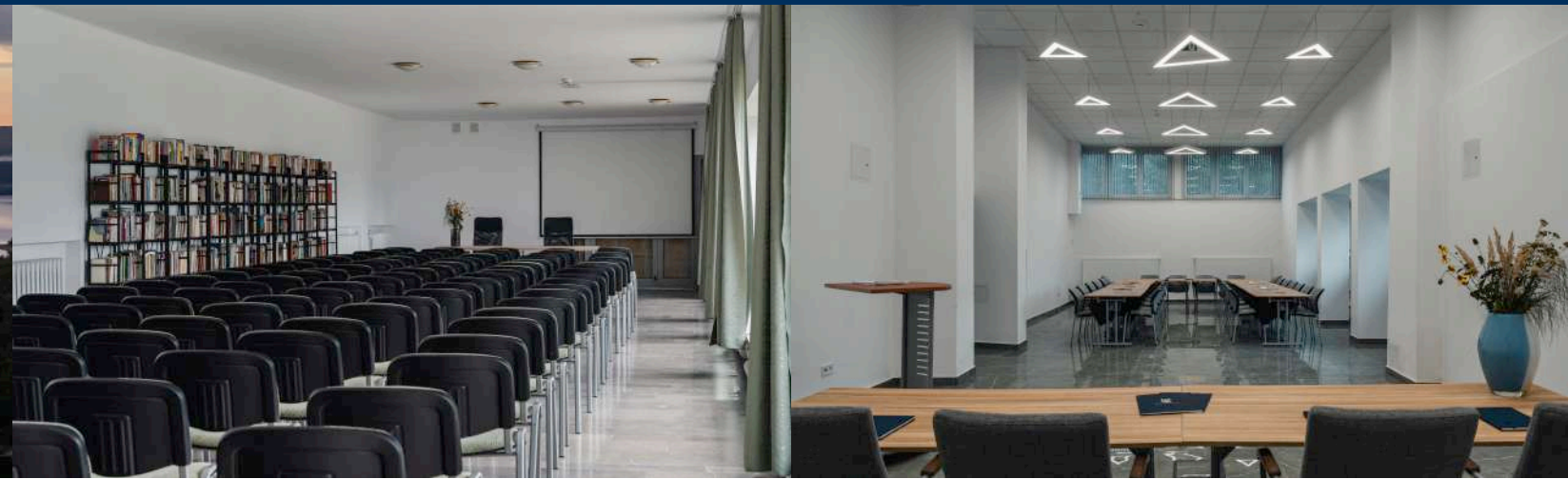
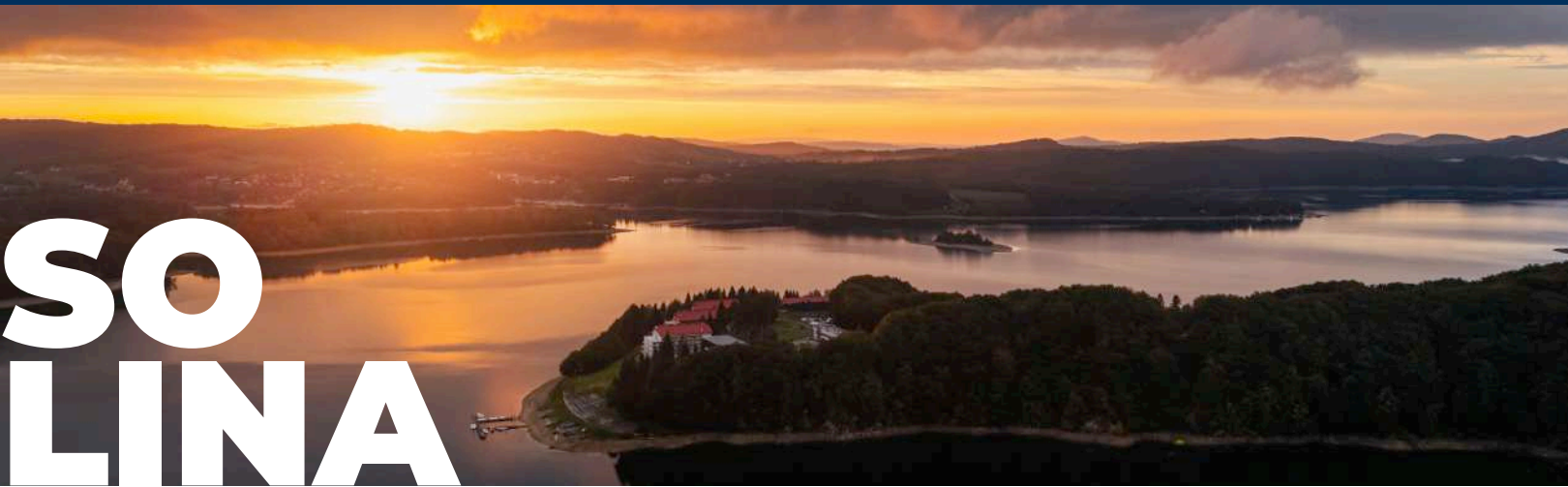
Rewita Rynia

Wczasowa 59
05-127 Białobrzegi

 rewita.pl/obiekty/rewita-rynia

 /rewitarynia

SOLINA



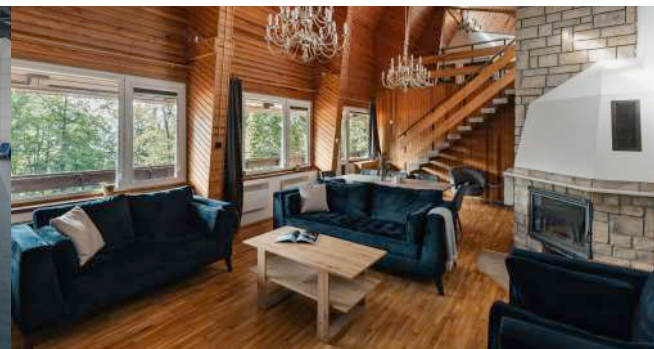
REWITA Solina is located in the heart of the Bieszczady Mountains, away from the hustle and bustle of civilization, surrounded by wild nature and directly on the Solina Lake, is an ideal place to relax for those who are seeking peace and tranquility.

The views from the Bieszczady hills and the nearby beautiful hiking trails - including two ending almost at the gates of the resort, make it an ideal place for people looking for convenient locations for hiking and cycling.

It is also an ideal area for observing wildlife and taking great nature photos. The cruise fleet operating on the lake offers an admiring views of the Bieszczady from the perspective from cruises which also dock at our resort's marina. Cross-country skiing in winter and Nordic walking all year round are also becoming more and more popular.

This still wild land of pastures and gentle mountain slopes, offering unforgettable views and picturesque landscapes, is a must-see for all nature lovers. We offer rooms, apartments and villas with views of the beautiful surroundings and the charming Solina Lake.

FACILITIES



tel.: +48 (13) 470 11 45
tel.: +48 (13) 470 11 00
rezerwacje-solina@rewita.pl



Rewita Solina
Solina 195
38-610 Polańczyk

rewita.pl/obiekty/rewita-solina
[/rewitasolina](https://www.facebook.com/rewitasolina)

ZAMEK CZOCHA

The Czocha Castle is a unique place visited by dozens of thousands of tourists every year. It is no coincidence that this medieval fortress is so popular, because as a monument it is a pioneer of a new approach to tourism on the Polish market.

The Czocha Castle offers standard rooms, local themed rooms and suites. The name of the themed rooms refers to the character of the architecturally beautiful fortress, and their decor reflects the atmosphere of old times.

Seekers of secrets from around the world, both those discovered and those remaining in the sphere of conjectures, come here every year wanting to learn the history of this unique and charming place, and to find confirmation of the legends circulating. The possibilities of the castle are almost unlimited, as evidenced by numerous festivals and events attracting crowds of tourists, which will take you to historical realities of this place and region.

The castle also houses the restaurant, where guests can try local specialities prepared based on traditional Polish cuisine, thus emphasizing the historical atmosphere of this place. In total, there are more than one hundred beds available in single, double, triple and quadruple rooms.

FACILITIES



tel.: +48 (75) 721 15 53
zamekczocho@rewita.pl



Zamek Czocha
Sucha
59-820 Leśna

 rewita.pl/obiekty/rewita-zamek-czocho

 /zamekczocho

KOŚCIE LISKO



REWITA Kościelisko - a holiday complex, part of which is the historic former sanatorium building dating back to the turn of the 19th and 20th century. It offers almost 400 beds in double and triple rooms and apartments for 2 and 4 people.

Our guests can admire the picturesque panorama of the Tatra landscape with a view of the monumental so called "sleeping knight" - Giewont Mountain.

It is an excellent starting point for mountain hikes in the western part of the Tatras. Its location near Zakopane - the capital of the Polish mountains, guarantees convenient and quick access to the city, but at a safe distance from the crowds of tourists.

The popular ski lift at Polana Szymbark is just 2.5 km away. Additional amenities include a gym, a cinema room, a fitness room, a children's playground, and a table tennis room.

FACILITIES



tel.: +48 (18) 207 93 00

rezerwacje-koscielisko@rewita.pl
repcja.koscielisko@rewita.pl



Rewita Kościelisko

St. Nędzy Kubińca 103
34-511 Kościelisko

 rewita.pl/obiekty/rewita-koscielisko

 [/rewitakoscielisko](https://www.facebook.com/rewitakoscielisko)

ZAKOPANE

REWITA Zakopane is an intimate and welcoming facility nestled in the very heart of Zakopane — the beloved capital of the Polish mountains and one of the country's most cherished destinations.

This exceptionally convenient location ensures that guests enjoy effortless access to the city's most celebrated attractions, vibrant local culture, and a wide selection of renowned ski resorts scattered across the surrounding mountain landscape.

Whether you're arriving for winter adventures on the slopes or simply seeking the restorative calm of alpine scenery, everything you need is within easy reach. The building's thoughtfully chosen position, at a comfortable distance from the most bustling and crowded areas of the city, guarantees that every guest can look forward to a genuinely peaceful and undisturbed stay.

Having undergone a thorough and comprehensive renovation in 2024, the facility now reflects the highest standards of comfort, quality, and modern hospitality, carefully considered to ensure that guests feel at ease throughout their entire visit.

FACILITIES



tel.: +48 (18) 20 21 400
tel.: +48 885 851 459
repcja.zakopane@rewita.pl






Rewita Zakopane










K. Przerwy-Tetmajera 27
34-500 Zakopane

 rewita.pl/obiekty/rewita-zakopane

 [/rewitazakopane](https://www.facebook.com/rewitazakopane)

CONTACT

 Rewita Sopot Kilińskiego 12 81-772 Sopot	 Rewita Jurata Helska 2 84-150 Hel	 Rewita Międzyzdroje Promenada Gwiazd 3 72-500 Międzyzdroje
 +48 58 551 06 85	 +48 (58) 675 42 28 +48 (58) 675 42 85	 +48 (91) 328 07 81
 rezerwacje-sopot@rewita.pl	 rezerwacje-jurata@rewita.pl	 rezerwacje-miedzyzdroje@rewita.pl

 Rewita Rogowo Rogowo 76 72-330 Mrzeżyno	 Rewita Mielno Suriana 24 76-032 Mielno-Unieście	 Rewita Waplewo Maróz 2 11-015 Olsztynek
 +48 91 386 62 69 +48 602 862 829	 +48 512 805 036 +48 (94) 348 18 00	 +48 (89) 519 25 25 +48 510 087 050
 rogowo@rewita.pl	 rezerwacje-mielno@rewita.pl	 rezerwacje-waplewo@rewita.pl

 Rewita Rynia Wczasowa 59 05-127 Białobrzegi	 Rewita Pieczyska Wypoczynkowa 1 86-010 Koronowo	 Rewita Solina Solina 195 38-610 Polańczyk
 +48 508 679 176 +48 (22) 768 01 66	 +48 (52) 382 74 19 +48 797 328 822	 +48 (13) 470 11 45 +48 (13) 470 11 00
 recepcja.rynia@rewita.pl	 rezerwacje-pieczyska@rewita.pl	 rezerwacje-solina@rewita.pl

 Zamek Czocha Sucha 59-820 Leśna	 Rewita Kościelisko St. Nędzy Kubińca 103 34-511 Kościelisko	 Rewita Zakopane K. Przerwy-Tetmajera 27 34-500 Zakopane
 +48 (75) 721 15 53	 +48 (18) 207 93 00	 +48 (18) 20 21 400 +48 885 851 459
 zamekczocho@rewita.pl	 rezerwacje-koscielisko@rewita.pl repcja.koscielisko@rewita.pl	 recepcja.zakopane@rewita.pl

FACILITIES



multi-purpose sports courts



tennis court



bicycle rental



water sports equipment rental



marina



playground / indoor play room



gym



fitness room



bonfire / barbecue area



salt cave



cinema room



jacuzzi



sauna



swimming pool



rope park



café



bar / beach bar



ping-pong



billiards



camping / caravanning site



air rifle range



bowling alley



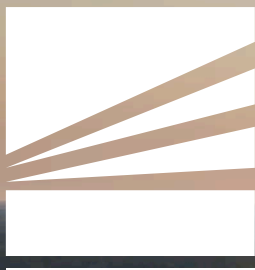
facility tour



city centre location



peace and quiet



AMW REWITA

AMW REWITA Sp. z o.o.
Zielone Zacisze 11 B
03-294 Warszawa

www.rewita.pl

facebook.com/rewita

instagram.com/amwrewita

