



# offer for business groups

# Farma Bii - a place where we build relationships

---

A corporate integration meeting at the Farm is a proposal for anyone who expects the highest level of service, a cozy atmosphere at a shared table and conditions conducive to concentration.

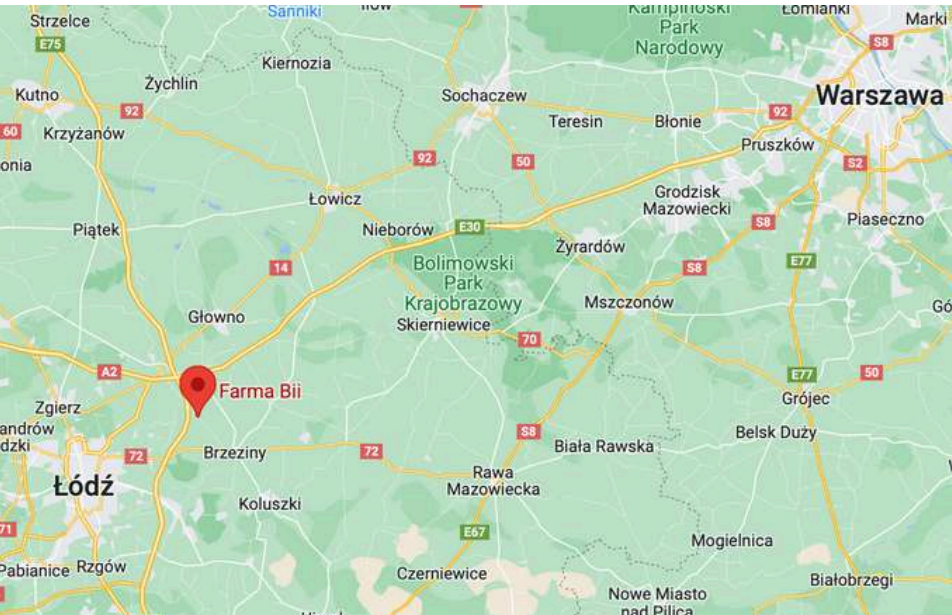
We have facilities for organizing trainings and presentations:

- a lecture room for up to 30 people
- accommodation up to 26 people
- a restaurant space for up to 30 people
- a restaurant bar with equipment adapted to the needs of the group
- a culinary training room



# Business meeting space

---



The convenient location of the Farm makes it easy to get there from any city in Poland.

The route from Warsaw to Janinów takes 1.15 hours on the motorway towards Łódź. The route from Łódź to Janinów takes 0.20 hours towards Stryków.

The training and presentation room is equipped with:

- professional sound system
- projector and screen
- flipchart board
- WiFi
- coffee bar adapted to the needs of the group
- possibility of arranging tables in a 2-person, 4-person or conference arrangement

# Integration space

---



**The elegant, stylish interiors and the delightful, green surroundings of Farma Bii are a perfect backdrop for integration in a wider group.**

**In addition, for individual relaxation, we recommend the swimming pool, sauna and relaxing or therapeutic massages.**



# Relaxation zone

---



Guests have access to a Finnish sauna, and can also take advantage of regenerative treatments, massages, and practice yoga.

Regeneration is handled by experienced physiotherapists and trainers, and during the treatments we use proven and safe cosmetics.



# Integration cooking workshops

---

As part of integration activities, we recommend cooking workshops led by selected Chefs. At Farma Bii cooking school, we conduct training for groups of at least 6 people. Workshops last about 3-4 hours. We end each meeting with a joint tasting of the prepared dishes.

We choose the workshop topics and the set of dishes together with the team. We recommend the best instructors to conduct the training. So far, we have worked with, among others:  
Daria Ładocha, Lara Gessler, Mateusz Gessler, Cristina Catese, David Gaboriaud, Bartek Kieżun, Jagna Niedzielska.



# Seasonal activities

---

Depending on the season and current weather, our business guests can enjoy additional attractions that will diversify their time spent at Bii Farm.

- wine tasting led by a qualified sommelier
- visiting a nearby vineyard combined with tasting of Polish sparkling wines
- bicycle trip through the forest
- bonfire with snacks
- yoga with a trainer



# Accommodation

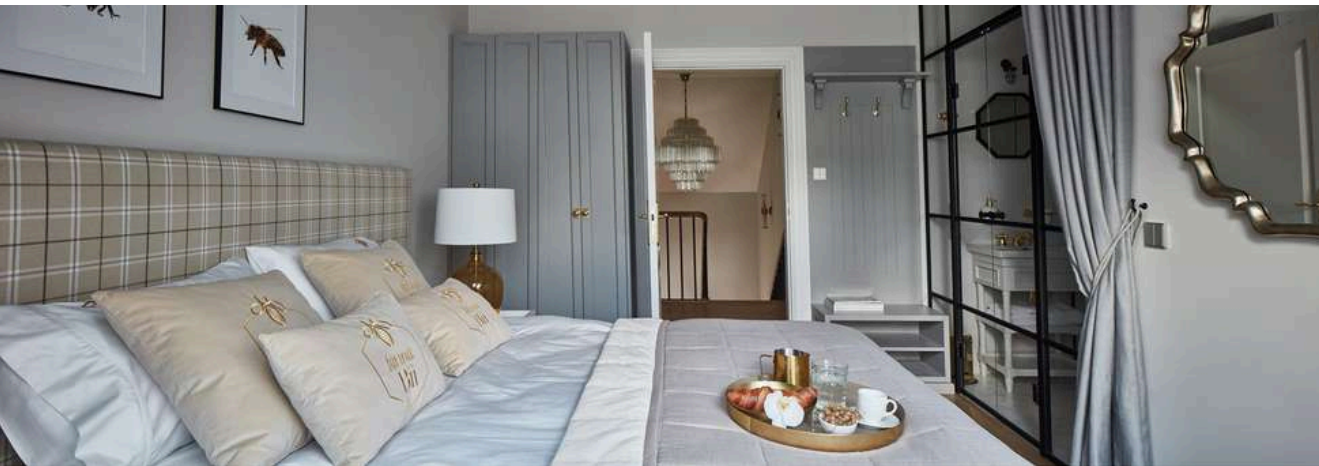
The boutique guesthouse Farma Bii offers accommodation in double rooms and detached cottages. The price of accommodation includes an excellent buffet breakfast.

## Accommodation:

- we have 9 double rooms and 2 four-person cottages
- arrangement of accommodation:
  - 8 double rooms - separated beds
  - 1 double room - double bed (shared)
  - 2 four-person cottages (bedroom with double double bed and 2-person sofa bed shared)

Number of people staying: 26 people

Accommodation in single beds: 21 people





# Accommodation in the Main Building

The main building features 9 double rooms, each with a private bathroom. All rooms are located on the upper floor of the guesthouse and are equipped with fans for your comfort.



# Accommodation in Cottages

---

We offer accommodation in two detached cottages. Each cottage includes a bathroom, a bedroom with a double bed, and a living room with a double sofa bed. The cottages are located approximately 10 meters from the main building and are equipped with air conditioning for your comfort.



# Additional information:

---



What sets us apart from other venues is our commitment to comfort – we always offer the entire facility exclusively for one group. This is our standard. We never combine different groups, ensuring your privacy, peace of mind, and a sense of security. The whole property is reserved solely for your use.

- The hotel day starts at 2 p.m. and ends at 11 a.m. Each additional hour before and after the end of the hotel day: + PLN 300 net/h.
- Breakfast included in the price of accommodation is served as a buffet + hot meals are served such as: scrambled eggs, eggs Benedict (with real "0" eggs), shakshuka, oatmeal (different milks to choose from). White and black coffee, tea, water.
- Lunch and dinner are served on plates. Guests choose from the menu sent to them. We take into account all allergies and different versions of the guests' meals.
- Continuous coffee break (coffee, tea, water in carafes, cake, fruit)
- All bottled drinks and alcoholic beverages can only be purchased from our alcohol card. Alcohol payable according to consumption.
- Orangery - bar area is open until midnight. Each additional hour started: + PLN 500 net / h
- Free parking



# Additional information:

---



## Additional attractions:

- Yoga for up to 10 people
- bonfire with snacks
- cooking workshops: duration approx. 2.5/3 h (including eating prepared meals). Participants prepare together with the Master Chef: meals (appetizer, main course, dessert). Menu prepared according to the Guests' instructions

## Massages:

- relaxing massage: PLN 290 net / 1h/person
- therapeutic massage: PLN 360 net / 1h/person
- hot stone massage: PLN 320 net / 1h/person

## At our guests' disposal free of charge:

- bicycles, nordic walking poles, yoga mats, basketball court
- finnish sauna open until 10 p.m.
- outdoor swimming pool (May/September) with slightly heated water (temp. 24-28 degrees Celsius). Open until 10:00 PM

Pricing prepared at 23% VAT - event organization.

Any changes in the agenda will require a new valuation.

The offer does not reserve the date. To book a stay, you must pay a deposit of 50% of the valuation value.





**contact us**

660 007 666 / [KONTAKT@FARMABII.PL](mailto:KONTAKT@FARMABII.PL)

[WWW.FARMABII.PL](http://WWW.FARMABII.PL)