

1 9  1 9

LEISURE

MOKUTI ETOSHA



CONFERENCE
BROCHURE



NAMIBIA

THROUGH OUR EYES

At O&L Leisure, we believe in creating experiences that reflect the heart and soul of Namibia—its vast landscapes, wildlife and the warmth of its people. “Namibia Through Our Eyes” is our promise to showcase this country in a way that is authentic, caring and passionate, ensuring that every luxurious moment resonates with the true spirit of Namibia.





RE-IMAGINED

EXPERIENCE IN NAMIBIA

FULL-DAY CONFERENCE PACKAGE

Exclusive use of the conference venue
 Arrival refreshment: Coffee and Tea
 Mid-morning break: Coffee, Tea and light refreshments
 Lunch
 Mid-afternoon break: Coffee, Tea and gourmet snacks
 Bottled water
 Fully air-conditioned conference room
 Flipchart with quality markers, notepads and pens
 Projector and integrated sound system
 Microphones and standard PA system

HALF-DAY CONFERENCE PACKAGE

Exclusive use of the conference venue
 Morning conference Arrival refreshment: Coffee and Tea
 Afternoon conference:
 Mid-afternoon break: Coffee, Tea and gourmet snacks
 Bottled water
 Fully air-conditioned conference room
 Flipchart with quality markers, notepads and pens
 Projector and integrated sound system
 Microphones and standard PA system

ADDITIONAL EQUIPMENT & SERVICES AVAILABLE UPON REQUEST (NOT INCLUDED):

HD video conferencing
 LED monitors and stage setups





ROOMS LAYOUT

VENUE	CINEMA/BANQUET	CLASSROOM	U-SHAPE
Experience Centre	14	14	14
Ongwe Room	60	50	35
Onkoshi Room	60	50	35
Combined Room	120	100	70

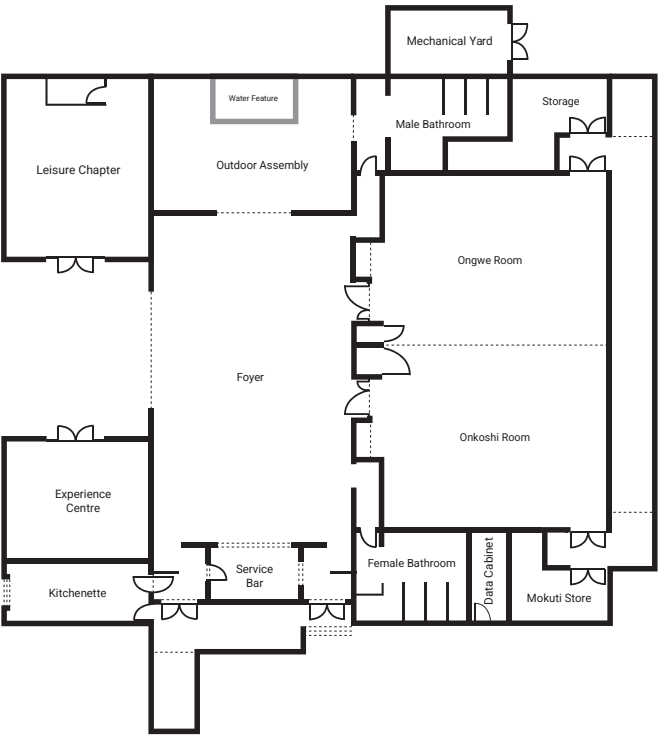
PRACTICAL INFORMATION

Day conference package rates are per person and based on a minimum of 10 delegates. Quotes are based on standard accommodations and day conference packages. Entertainment and décor are available at an additional charge and will be based on minimum costs and the varying number of delegates.

VIDEO CONFERENCING

Advanced connectivity with cutting-edge video conferencing technology enables seamless collaboration across continents. Our internet infrastructure and state-of-the-art audiovisual equipment facilitate dynamic virtual meetings. This technology transforms distance into proximity, enabling real-time transmission of audio, video, presentations and interactive content through our premium digital networks.

CONFERENCE ROOM MAP





CATERING VENUES

ONKOSHI & ONGWE BANQUET ROOM

Minimum 30 guests - Maximum 120 guests.
Mokuti's private and exclusive banqueting facility.

POOL AND GARDENS

Minimum 30 guests - Maximum 120 guests.
An open-air choice of venue in the sprawling landscaped gardens of Mokuti, under the trees.

ACCOMMODATION

114 rooms with a view of the sprawling gardens or indigenous bush, situated in separate one-story chalet-style buildings with thatched roofs, set within a large landscaped garden.

90 standard rooms and 16 deluxe rooms
8 standard family rooms - separate bedroom and one sleeper couch accommodating two children, with shared bathroom.

Family accommodation

Children sharing with adults
Double/twin rooms: 2 adults + 1 cot (0-2 yrs)
Family room: 2 adults + 2 children (0-15 yrs)
sharing sleeper couches

ALL ROOMS OFFER

- En-suite bathroom with shower
- Air conditioning
- Electronic door locks
- Hairdryers
- In-room safes
- Smart TVs
- Tea and coffee making set
- Mini bar
- Wi-Fi available
- Electrical supply 220V/50Hz
- International adaptors





ENHANCE YOUR EVENT WITH THE FOLLOWING OFFERINGS

ETOSHA SUNRISE AND SUNSET NATURE AND GAME DRIVE

Discover the captivating beauty and diversity of Etosha's wildlife with every game drive.

NATURE AND GAME DRIVE

Enjoy a one-hour drive on the Mokuti Estate with a stop at a waterhole.

ONTOKA REPTILE PARK

Embark on an up-close and personal encounter with some of Namibia's most fascinating creatures at the Ontoka Reptile Park.

OMULILO SPA

Where wellness meets African authenticity.

Experience authentic African hospitality through our thoughtfully created catering at distinctive venues across our re-imagined sanctuary.

Team-building activities, game drives, night drives, cultural SAN walks, sundowners and captivating snake park encounters can be arranged or customised based on your specific requirements.

SCAN ME FOR MORE DETAILS
ON THE **MOKUTI EXPERIENCE**.



HOTEL DIRECTIONS AND ACCESS

ACCESS BY AIR

Windhoek via Fly Namibia ±90 minutes to Ondangwa Airport.
Transfers can be arranged from Ondangwa Airport to Mokuti.

Mokuti airstrip details

IATA Code: OKU
ICAO Code: FYMO

Latitude: 18° 48'43.48" S
Longitude: 17° 2'47.62" E
Runway length: 2 200m
Runway width: 30m
Runway elevation: 3 650ft

ICAO reference code

No. 3 with a non-instrument runway intended for daylight operation only. The airstrip has a gravel surfaced runway which is approximately 1 400 metres gravel and 600 metres concrete and has a published LCN of 8. The designation of the runway is 08/26. Airstrip landing and parking fees are levied.

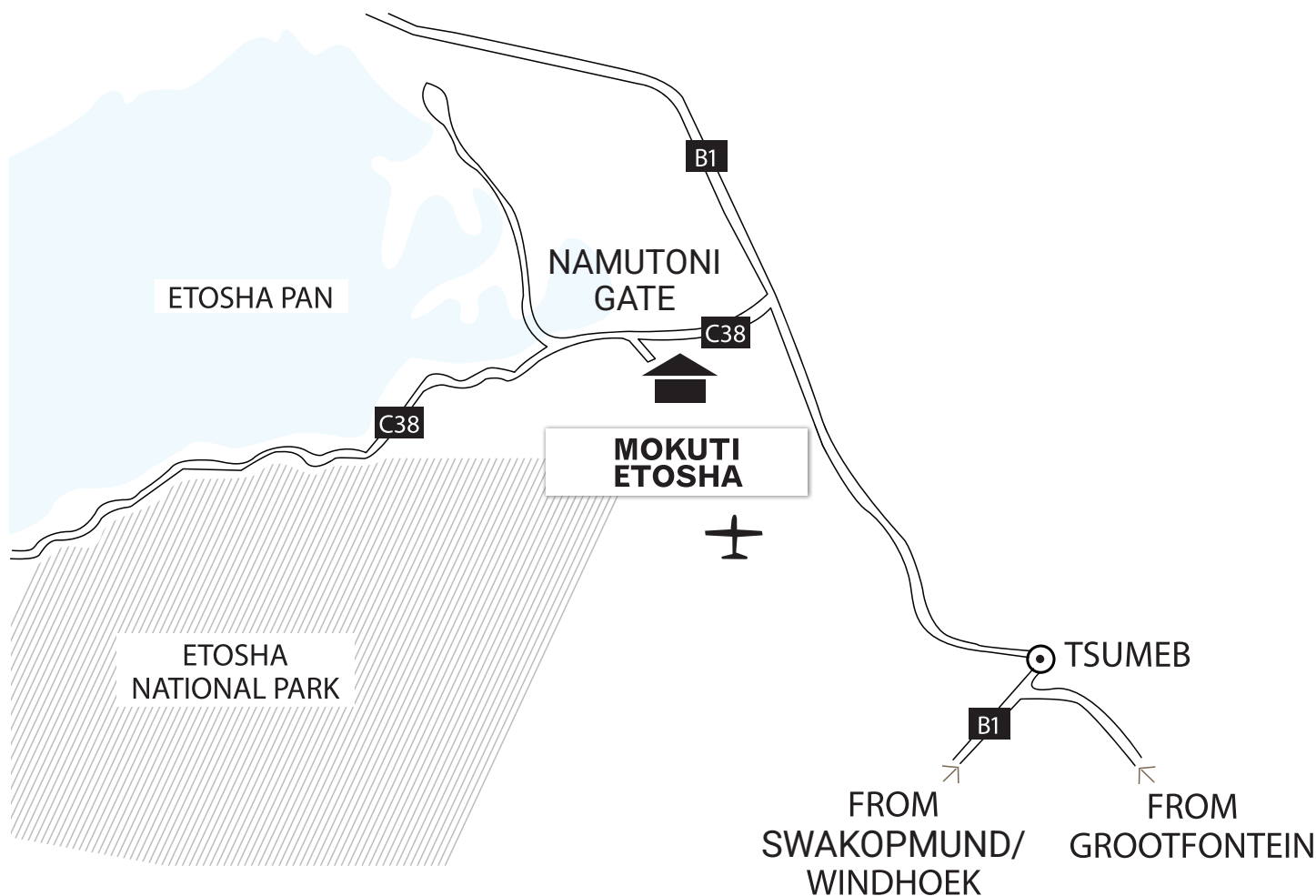
ACCESS BY ROAD

Mokuti is situated approximately 550 kilometres north of Windhoek, ±5 hours travelling time. From Windhoek, follow the B1 in the direction of Okahandja for ±505 kilometres.

Turn left onto the C38 for 25 kilometres and follow the signs towards Namutoni. Mokuti is on the left just prior to reaching the Von Lindequist Gate into Etosha National Park.

NEARBY PLACES OF INTEREST

Etosha National Park – 40m to the Von Lindequist Gate, Namutoni Fort
Oshikoto Lake – 70km
Ombili Foundation – 50km





FOR MORE INFORMATION,
KINDLY CONTACT US

mokuti.res@ol.na

+264 67 229 084

ol-leisure.com

