

1 9  1 9

# LEISURE

STRAND HOTEL SWAKOPMUND



CONFERENCE  
BROCHURE





NAMIBIA

# THROUGH OUR EYES

At O&L Leisure, we believe in creating experiences that reflect the heart and soul of Namibia—its vast landscapes, wildlife and the warmth of its people. “Namibia Through Our Eyes” is our promise to showcase this country in a way that is authentic, caring and passionate, ensuring that every luxurious moment resonates with the true spirit of Namibia.







## DISCOVER LEISURE IN BUSINESS AT STRAND HOTEL SWAKOPMUND

---

At Strand Hotel Swakopmund, we blend business with pleasure, offering Namibia's premier destination for exceptional conferences and events, all in one unique place. Whether you're planning a corporate retreat, a large-scale conference or an intimate meeting, Strand Hotel provides the perfect setting to inspire productivity and promote collaboration.

Our conference venues are equipped with state-of-the-art technology and amenities, ensuring a seamless and professional experience for all attendees. From versatile meeting rooms to elegant banqueting venues, we cater to events of all sizes and styles. Our passionate team of event planners is committed to delivering personalised service, tailored to exceed your specific needs and expectations.

In addition to our outstanding conference facilities, Strand Hotel offers luxurious accommodation and a range of exceptional leisure activities to enhance your stay. Explore the rich culture and natural beauty of Swakopmund or simply relax and unwind in our serene surroundings.



A tailored selection of exceptional dining experiences awaits, including Brewer & Butcher, Farmhouse Deli and Ocean Cellar. Each restaurant offers a unique yet consistently authentic and world-class dining experience. Brewer & Butcher showcases Namibian excellence with inviting spaces and exceptional hospitality, offering innovative meat dishes and exclusive craft beers. Farmhouse Deli, renowned for its breakfast offerings, provides a high-end, yet homely ambiance, blending world-class cuisine with a welcoming environment. At Ocean Cellar, the focus is on delivering the finest seafood from local waters, combining traditional techniques with innovative culinary expertise to create an exceptional seafood dining experience.

Together, these restaurants celebrate Namibian culture, pride and unity, with a burning passion for authentic flavours and impeccable service. More eateries include the Welwitschia lounge and the Café Mole, where guests can also indulge in delicious food and beverages – all day long.

At Strand Hotel, we understand that every event is unique. Let our authentic, caring and passionate team help you create memorable and impactful experiences that will leave a lasting impression on your guests.

### GOOD TO KNOW

Check-in time: from 14h00  
Check-out time: 10h00  
Wheelchair-friendly  
Children of all ages are welcome  
Luggage storage available  
No pets allowed, with exception of guide dogs.







## FULL-DAY CONFERENCE PACKAGE

---

### ALL FULL-DAY CONFERENCE PACKAGES INCLUDE

Arrival tea/coffee  
Mid-morning tea/coffee break  
Mid-afternoon tea/coffee break  
Lunch (excluding beverages)  
Venue hire  
Multi-media projector and screen  
2 x handheld microphones (available upon request, subject to availability)  
1 x flip chart per conference  
Conference notepads and pens  
Water and cordials  
Peppermints / sweets  
Wi-Fi available

## HALF-DAY CONFERENCE PACKAGE

---

### ALL HALF-DAY CONFERENCE PACKAGES INCLUDE

Arrival tea/coffee  
Mid-morning tea/coffee break or  
mid-afternoon tea/coffee break  
Lunch (excluding beverages)  
Venue hire  
Multi-media projector and screen  
2 x handheld microphones  
(on request and subject to availability)  
1 x flip chart per conference  
Conference notepads and pens  
Water and cordials  
Peppermints / sweets  
Wi-Fi available

**\*The tea break is available either mid-morning or mid-afternoon, tailored to the schedule of your conference.**

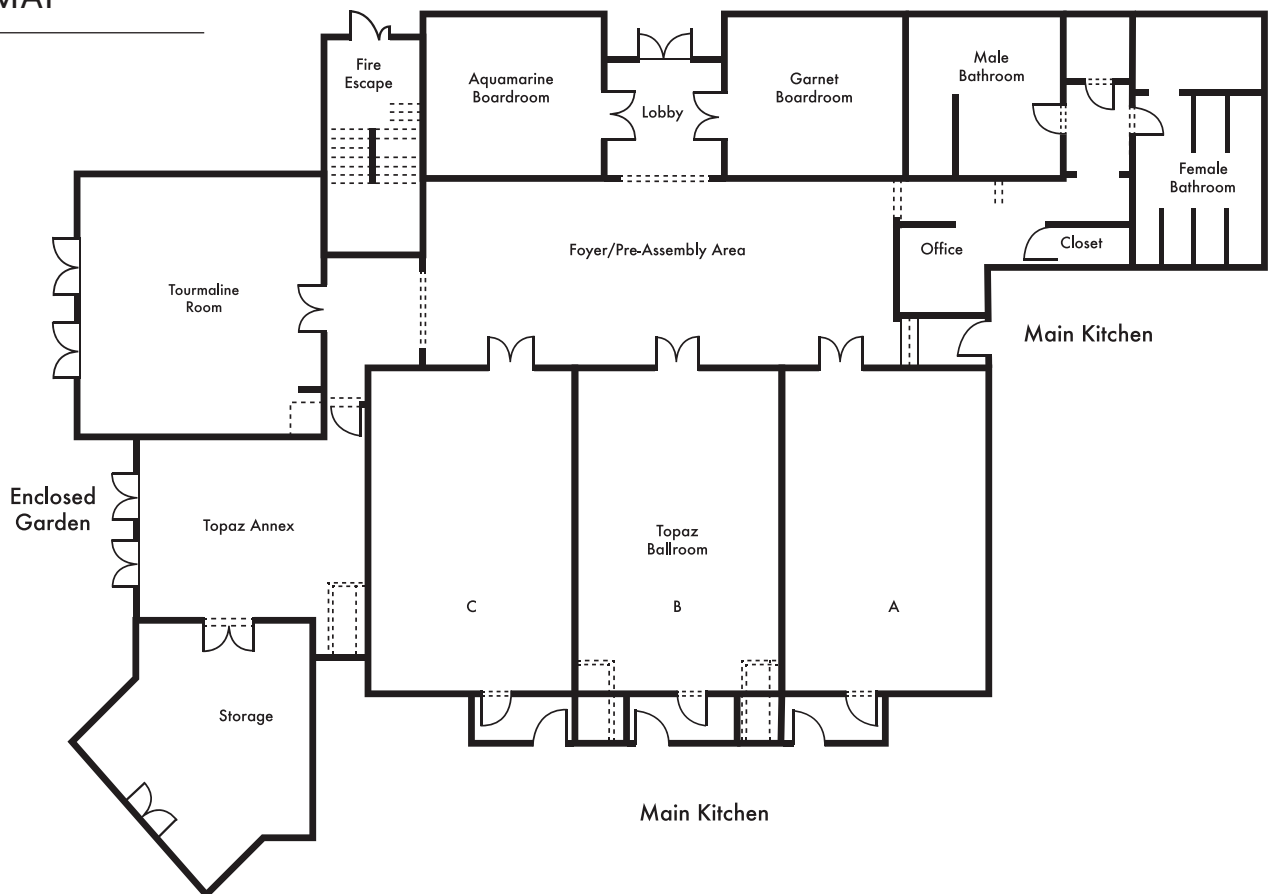
**Note:** Please be advised that we do not have an AV technician available on the property. However, you may outsource an AV technician privately for your event.





## CONFERENCE ROOM MAP

Entrance from Porte-Cochère







# SPECIFICATIONS

## SEATING CAPACITIES

VENUE (MAXIMUM)	BOARDROOM	CINEMA	SCHOOL	U-SHAPE	OPEN SQUARE	INDIVIDUAL MEETING	BANQUET	COCKTAIL
Topaz Ballroom Total	N/A	200	120	70	66	42	110	110
Topaz Ballroom A	30	50	30	20	30	15	40	30
Topaz Ballroom B	30	50	30	20	30	18	30	30
Topaz Ballroom C	30	50	30	20	30	15	30	30
Topaz Ballroom A+B or B+C	48	100	60	40	48	30	60	60
Tourmaline Room	24	40	20	21	24	12	30	30
Aquamarine/ Garnet Boardroom	12	N/A	N/A	N/A	N/A	N/A	N/A	N/A
Topaz Annex*	N/A	N/A	N/A	N/A	N/A	12	20	20

\* Annex only used for banquet and cocktail layout in conjunction with or as link between Topaz and / or Tourmaline



## DIMENSIONS

VENUE	WIDTH (m)	LENGTH (m)	HEIGHT (m)	AREA (m²)
Topaz Ballroom Total	9,8	20,4	4,0	199,5
Topaz Ballroom A	9,8	6,8	4,0	66,5
Topaz Ballroom B	9,8	6,8	4,0	66,5
Topaz Ballroom C	9,8	6,8	4,0	66,5
Tourmaline Room	7,7	7,1	4,0	55,5
Aquamarine/Garnet Boardroom	4,4	5,7	2,8	25,3
Foyer	5,6	15,5	4,1	87,7
Topaz Annex*	5,6	7,5	2,5	42,2

\*Annex only used for banquet and cocktail layout in conjunction with or as link between Topaz and / or Tourmaline

## DOOR OPENING CLEARANCES

DOOR OPENING	WIDTH (mm)	LENGTH (mm)
1	2 595	1 625
2	2 595	2 970
3/4/5	2 410	1 395
6	2 300	2 400
7	2 300	2 715







## ACCOMMODATION

---

- 125 en-suite rooms
- 74 standard rooms
- 2 standard enabled rooms
- 40 luxury rooms
- 6 junior suites
- 2 luxury suites
- 1 presidential suite

**Most rooms have a breathtaking panoramic sea view.**

## ALL ROOMS OFFER

---

- 18 luxury rooms available with "step-out" balconies
- 4 junior suites and 2 luxury suites available with "sit-on" balconies
- Wi-Fi available
- Air conditioning
- Floor-to-ceiling panoramic sliding windows(standard rooms) and doors (luxury rooms and suites)
- Electronic door locks
- Hairdryers
- In-room safe
- Direct-dial telephones
- IPTV
- Tea and coffee making set - Nespresso machines in all suites
- Complimentary mini-bar in all rooms
- Desk with international plugs for Europe, UK and South Africa.







## SPA

---

The Atlantic Spa offers a perfect combination of relaxation and renewal, harnessing the healing powers of the Atlantic Ocean and the vast Namib Desert. World-class offerings include individual crystal steam rooms, rain showers, an exclusive relaxation lounge and enjoyment of the outdoors on the spa's spacious garden terrace with an outdoor couple's therapy suite.

### SPA OPERATING HOURS

Sunday - Thursday:	09h00 - 19h00
Friday - Saturday:	09h00 - 20h00
Public Holidays:	09h00 - 20h00



## GYM

---

Our state-of-the-art gym on the 2nd floor features a spacious 73m<sup>2</sup> studio and is fully equipped for all your fitness needs. Enjoy the convenience of working out in a luxurious setting, accessible 24/7 with your room keycard. We invite you to relax and rejuvenate after your workout in our opulent his-and-hers facilities, complete with private saunas.





## OCEAN CELLAR

---

Indulge in the finest ocean offerings at our seafood restaurant and oyster and wine bar, featuring a sea-facing terrace. Specialising in the finest ocean offerings, including Namibian oysters, sushi and sashimi. Guests can choose from a vast selection of wines from the cellar, available by the glass or bottle. A unique highlight is the show kitchen, where diners can sit at the counter and watch the chefs in action. The à la carte menu features lunch, dinner and seafood bar snacks.

## BREWER & BUTCHER

---

Craft meets cuisine at the Brewer & Butcher. A microbrewery, beer garden, restaurant, bar and lounge with an open fireplace are complemented by a sea-facing terrace featuring its own fireplace. The à la carte menu offers lunch, dinner and bar snacks, specialising in Namibian, German and other meat dishes, along with craft beers brewed on-site. Guests also have the opportunity to experience the brewing process first hand.

## FARMHOUSE DELI

---

Indulge in Swakopmund's finest breakfast from 06h00 to 11h00. Our charming farm-style restaurant and coffee house offers globally inspired à la carte menus for lunch and dinner. We are open 7 days a week serving until 22h00. Delight in our delectable cakes, pastries, snacks and speciality teas and coffees throughout the day.

## WELWITSCHIA LOUNGE

---

Privately located just beside the lobby, this lounge features an open fireplace, bar and a sea-facing terrace. It serves cocktails, drinks, teas and coffees, along with light hot and cold snacks, as well as a variety of cakes and pastries. Open daily until late.

## CAFÉ MOLE

---

Grab a delicious takeaway and enjoy it on the iconic Mole, offering panoramic views of Swakopmund's main beach and the Atlantic Ocean.



## HOTEL DIRECTIONS AND ACCESS BY ROAD

---

### From **Windhoek**

Take the B1 towards Okahandja and follow signs to Swakopmund.

Total journey = 4hrs - 365km

### From **Walvis Bay**

Follow the signs to Swakopmund and travel along the Atlantic coast.

Total journey = 40min - 35km

### From **Etosha's eastern side**

Drive south to Tsumeb and to Otjiwarongo then follow signs to Okahandja and to Swakopmund.

Total journey = 7hrs - 600km

### From **Etosha's western side**

Drive south to Outjo and Otjiwarongo and follow signs to Omaruru and Karibib to Swakopmund.

Total journey = 6hrs - 519km

### From **Sossusvlei/Sesriem area**

Drive the C14 towards Walvis Bay.

In Walvis Bay take the road to Swakopmund.

Total journey = 5hrs - 345km

### In **Swakopmund** itself,

If you are in town, head towards the Mole area.

Turn right into Strand Strasse, then left into the Strand Hotel Swakopmund access road.

## DIRECTIONS BY AIR

---

### Via **Walvis Bay International Airport**

A 40-minute road transfer. Serviced by various airlines from Windhoek and Cape Town with connecting flights from Johannesburg.

### Via **Swakopmund Airport by private charter**

A 20-minute road transfer.

### Via **Windhoek International Airport**

A 4-hour road transfer or a 60-minute charter flight is available. You can discover Namibia through our eyes with Leisure Tours' unforgettable experiences by road and air.







FOR MORE INFORMATION,  
KINDLY CONTACT US

---

[shs.bqoffice@ol.na](mailto:shs.bqoffice@ol.na)

+264 64 411 4601

[ol-leisure.com](http://ol-leisure.com)

